

Poczwarka *Staphylinus erythropterus* L. (Coleoptera,
Staphylinidae)

The pupa of *Staphylinus erythropterus* L. (Coleoptera,
Staphylinidae)

napisał

ANDRZEJ SZUJECKI

One of the most common Staphylinids living in forest litter is *Staphylinus erythropterus* L. However, in the available literature its pupa have not been as yet described. It is a result of a poor knowledge of Staphylinids pupae in general. A description of certain pupa given by Frisch (1724) was indeed considered as a description of pupa of *S. erythropterus* L., but it is very incomplete and drawings are unclear. In consideration of this it can as well concern a related species — *S. caesareus* Ced. Therefore I consider it reasonable to describe the pupa of *S. erythropterus* L. and to give its drawings (fig. 1, 2, 3). In description I followed the examples inserted in an important work of R. Paulian (1941) dealing with early development stages of Staphylinids.

Closed pupa (pupa obtecta), length 10 mm, yellowish-bricky in colour. Lateral margins of tergites (from IInd to VIIIth) and sides of sternites (from IInd to VIIth) brown. Mandibles black. Body almost of pear shape, in abdominal part somewhat dorsal-ventrally flattened, hard. Surface smooth, here and there fine folded. Head bowed toward breast. Mouth-parts dissected towards the back of the body. Mandible very distinct. Antennae bowed reach the knees of second pair of legs. Length of pron-

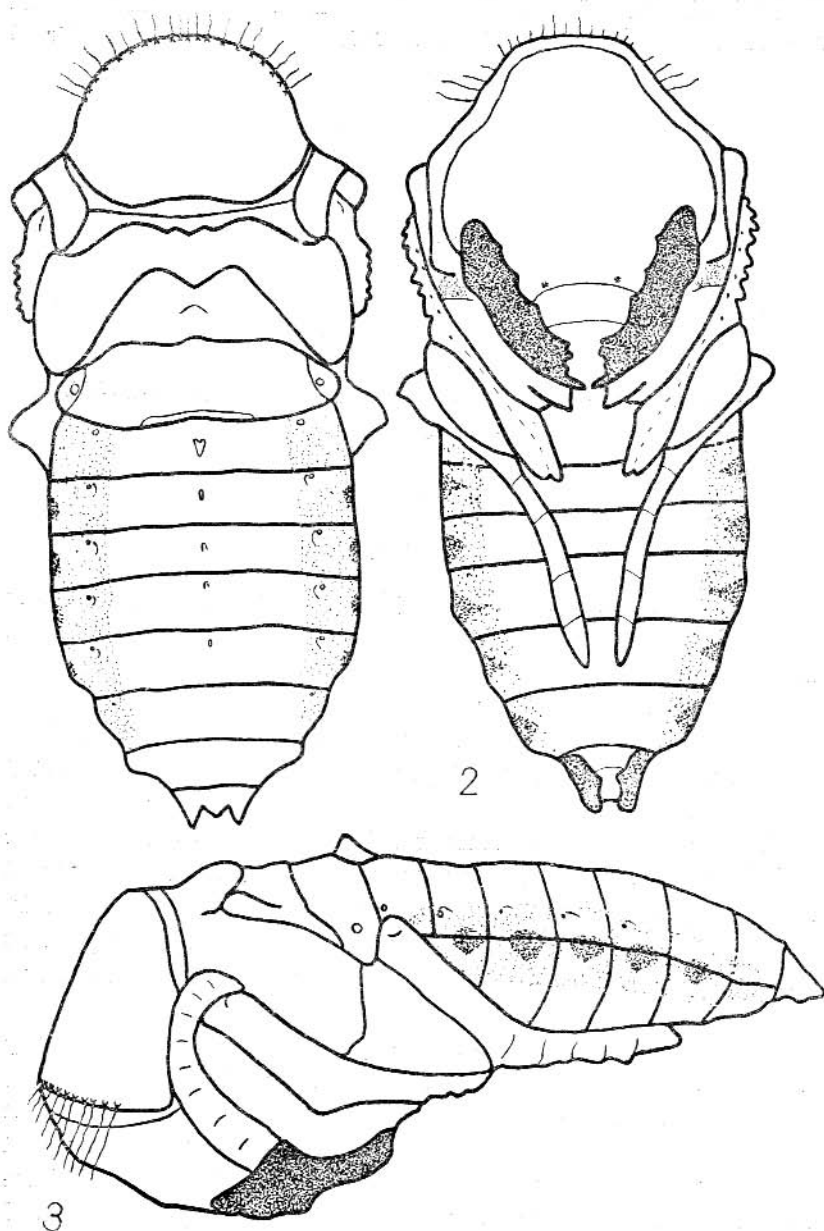


Fig. 1-3. The pupa of *Staphylinus erythropterus* L.; 1 — from above, 2 — from beneath, 3 — from the side.

tum more or less equal to its largest width. On the front margin of pronotum there are 20 black, setaceous hair grown out of small elevations. Bristles are directed rather towards front along a parallel line with pronotum surface. The length of bristles is increasing from centre to externe ones. Hind margin of pronotum feebly cut out in the centre. Mesonotum separated from pronotum by a wide furrow. The width of mesonotum considerably larger than its length. Front margin of mesonotum cut out into three bays. Hind margin cut into two bays, in the centre with a wide, triangular projection. Postnotum narrower than mesonotum, its hind margin is in a centre feebly cut out. Legs well marked. Femora put across a longer line of the body. Tibiae and tarsi directed obliquely to the middle of the body. Teeth on the exterior margin of second pair of tibiae easily visible. Ist tergite of abdomen longer than any next one. In the neighbourhood of its hind margin there is a short transversal furrow. The width of tergites from IInd to Vth is gradually increasing. The width of tergites from VIth to IXth is gradually decreasing. On each side of tergites (from Ist to VIth) there is one spiracle and on the tergites from IIIrd to Vth also one bristle on each side. On the centre of width of tergites from IInd to VIth there is also one darker spot on each. Tergite IXth drawn out into two short blunt projections. There are seven visible sternites. On each side of Vth and VIth sternites there is one small elevation. Sternite VIIth drawn out into two short, curved, blunt projections, which are of a bit darker in colour.

The pupa was collected in pine stand in forest-district of Szeroki Bór, district Pisz, on 20th of August, 1958, in the surface soil layer under mosses: *Hypnum schreberi* Moenk and *Hylocomium splendens* Hedw. An adult left the pupa on 25 VIII 1958.

The pupa of *S. erythropterus* L. differs from the yet described pupae of the species of related genera (*Ocypus* Leach, *Creophilus* Mann.) by number of setaceous hairs on the fore parts of pronotum.

STRESZCZENIE

Autor opisuje poczwarkę *Staphylinus erythropterus* L. Różni się ona od dotychczas opisanych poczwarek gatunków należących do pokrewnych rodzajów (*Ocypus* Leach, *Creophilus* Mann.) ilością długich szczecinek na przednim brzegu przedplecza.

PISMIENICTWO — REFERENCES

- Frisch, J. L., Beschreibung von allerley Insecten in Teutschland, V, 26, Berlin 1724, p. 50-51.
- Paulian, R., Les premiers états des *Staphylinoidea* (Coleoptera). Etude de morphologie comparée, Mém. Mus. Nat. (N. S.), 15, 1941, p. 1-361, 3 tabl., 1365 fig.