

Materiały do znajomości wachlarzykowatych (*Lepidoptera*,
Crambidae).

Część II. *Crambus radiellus tatricellus n. ssp.*

Studies on the *Crambidae* (*Lepidoptera*).

Part II. *Crambus radiellus tatricellus n. ssp.*

napisał

STANISŁAW BŁESZYŃSKI

According to Müller-Rutz¹ typical specimens of *Crambus radiellus* (Hbn.), and its aberration *tristrigellus* Rag. have the following characters: „*Radiellus* Hbn., fore wings

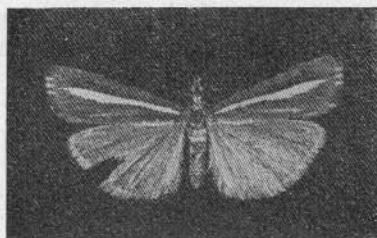


Fig. 1. *Crambus radiellus* (Hbn.). Tirol Stubal 2500 m Hoher Burgstall.
Fig. 2. *Crambus radiellus tatricellus n. ssp.* Tatry Mts. Mała Swi-
nica 1300 m.

lustrous, olive-brownish with shining longitudinal stripe... Palps and the tegulae always brown. Upper part of the head and thorax coloured like the palps or a little clearer, some-

¹ Ueber *Crambus radiellus* Hb., *tristrigellus* Rag. und *intermediellus* MR. und eine neue Art aus den Pyrenäen. Mitt. Schweiz. Ent. Ges., Bern, 15, 1933, p. 457-462.

times brownish-white. Cilia on the outer margin of the fore wing brown, cut by white streaks“.

Having received a series of specimens of *Crambus radiellus* (Hbn.) from Tirol and Carinthia (fig. 1) I stated that Müller-Rutz's diagnosis for *C. radiellus* (Hbn.) is correct with the slight addition only that the cilia on the outer margin of the fore wing are sometimes a little cleared up.

Crambus radiellus (Hbn.) from the Tatra represents a distinct sub-species for which I give the name *Crambus radiellus tatricellus n. ssp.*

Crambus radiellus tatricellus n. ssp.: cilia on the outer margin of the fore wing near apex brownish, beneath snow white on tornus fuscous. The basal stripe of the cilia several times cut by white streaks. Thorax and patagia snow white in the middle, olive-brown on the sides. Head from above snow white, sometimes cream-coloured (fig. 2). The male and female copulatory apparatuses in *C. radiellus tatricellus n. ssp.* and in the typical form of this species are identical.

I did not find typical specimens of *C. radiellus* (Hbn.) in the Tatra Mountains, but transitory ones sometimes occur there.

Examined material:

- Alps: 1 male spec.: Tirol Ötztal Rofenberg 2600 m. 2 male spec.: Tirol Stubai 2500 m. Hoher Burgstall.
 1 male spec.: Carinthia 2300 m. Gr. Glockner Guttal.
 1 male spec.: Allgauer Alpen Gemstetal b. Mittelberg.
 8 male and female spec.: 17. 7. 49-50 Kanten Sanalpe 1700 m.
- Tatra Mts.: 24 male and female spec.: Polonia, Tatra Mts. Hala Gąsienicowa 1500 m. 27 male and female spec.: Tatra Suchy Kondracki.
 15 male and female spec.: Tatra Mts. Mała Świnica 1300 m.
 23 male and female spec.: Tatra Hala Ornak 1100 m VII.

STRESZCZENIE

Autor opisuje nowy podgatunek tatrzański *Crambus radiellus tatricellus n. ssp.*